



JUNE 2015



'Youth to Everest' travellers take action following quake

Otamatea High School student and Paparoa resident Rita Hames reports on her recent experiences in Nepal:

Over the April school holidays Samantha Allen and I spent two weeks in Nepal with *Youth to Everest*, as part of our Gold Duke of Edinburgh qualifying tramp and residential project.



Prior to the trip, Sam and I spent eight months fundraising to get ourselves there. We spent 11 days of the trip in the Himalayan mountains where we got to experience some life changing things.

One of the main highlights was the people we met along the way, not just our group that we travelled with for two weeks, but our two Sherpa guides who were locals in the mountains and both incredible people. The children that we met and played with in the villages, and the chance to get a little peek into the day-to-day lives of the locals were so special.

During our time in the mountains we walked most days between villages, played in the snow as it fell, did some community work, visited the

schools and hospital Sir Edmund Hilary helped build, and experienced the bond that has been created between New Zealand and Nepal.

Just a week after arriving back in New Zealand, we were hit with the bombshell that Nepal had been struck by a big earthquake, killing over 8,000 people and displacing thousands more. Many of the places in the mountains that we stayed in or visited, have been badly damaged. Both Sam and I, distraught over this massive event, which we missed by just a week, have thrown ourselves into more fundraising.

We had two cake stalls and collections at school and have been accepting donations from family and friends.

Through *Youth to Everest* we have linked into the crowd-funding site – *Indiegogo* - which takes nothing from the funds raised, meaning that all donations go directly to the mountain villages to help repair some of the damage.

We are so grateful to have had this amazing opportunity and want to give something back.

Rita Hames, 16 years



Paparoa JMB Rugby

We would like to thank the community for all your support at our first home game of rugby for the season. We welcomed over 200 visitors to our club providing a warm inviting environment and were proudly smokefree. Thank you to Lawrie Stevens for coming and taking photos for us and everyone else who helped to make the day so successful.

We are having a great season so far and enjoying watching the children grow with confidence from week to week. We have fantastic members of our community volunteering to help our children and for that we are very thankful.

Our next home game is Saturday 20th June. Everyone is welcome and encouraged to come down and watch our amazing children.

Cullen Peele scoring a try against Tomarata with the rest of the Paparoa under 11 team in sup-

Tina Ball

Paparoa Press PP

PUBLISHED MONTHLY BY
Progressive Paparoa Inc. (PPI),
for Paparoa, Pahi, Matakoho,
Whakapirau and Tinopai.

CIRCULATION 1,000

CONTACT US

• press@paparoa.org.nz
• ph 09 431 7209
• PPI, PO Box 107, Paparoa 0543
• www.paparoa.org.nz

ADVERTISING

Rate Card available by email
Booking & Copy deadline:
15th of month
Publication date 1st of month

Lifestyle Village progress

Paparoa's Lifestyle Village project has taken a further significant step with the development of a Scheme Plan.

Designed by Wayne Birt who is a registered surveyor and a member of the SteeringGroup, the plan shows the proposed layout of the village and road network.

Wayne said the topography and natural features of the site have given us the opportunity to incorporate a number of exciting and attractive elements into the design.

Having a detailed Scheme Plan will enable estimates of costings to be done and for consultation with the KDC.

The Steering Group is discussing the plan with a number of interested parties within the community to gain feedback on the layout and lot sizes in order to fine tune various aspects before releasing it to the public.

Notice to advertisers

Paparoa Press is very grateful for the support of advertisers. Without them we could not publish. Please be aware that it takes time to turn your ideas into an attractive and eye catching ad. Where considerable design work is required there will be a \$25/hour charge. This is considerably less than a graphic design company would charge. If your new or changed ad is print ready (in the opinion of the editor) there will be no charge. PP

SHEPPARD ELECTRICAL LTD

ELECTRICAL INSTALLATION
AND MAINTENANCE

Bill Sheppard
Electrician



021 975 618

OR
a/h 09 431 7196

Safe Relationships – Are You Ok?

Would you recognise the warning signs of an unsafe relationship? Would you know how to get help?

On June 24 Leslie Elliott will be speaking, along with others, about safe relationships, the warning signs to look out for in unsafe relationships, and where to go for help. Leslie set up the Sophie Elliott Foundation after the tragic death of her

daughter Sophie at the hands of Sophies former boyfriend. Leslie aims to raise awareness among all young people and their friends and families, of the signs of partner abuse. The evening is especially aimed at senior students, all parents and community members, so we all know what to look out for to help keep our young people safe.

This FREE event, funded by Rural Women NZ & the Ministry of Social Development will be held on Wednesday June 24 at Otamatea High School hall from 7-9pm. Supper will be provided. For further information contact Libby Jones 09 4316 822 hames. jones@xtra.co.nz See also www.sophieelliottfoundation.co.nz; www.areyouok.org.nz

The Corner Place Nursery

- Large range Vege & Flower Seedlings
- Potted Colour
- Wide range Herbs
- Ferns
- Hanging Baskets
- Feijoa (Mammoth) Plants \$7.50



Over 60 Roses arriving early June

Wholesale orders for Seedlings welcome

George & Etha Taylor
on the corner at 13 Jellicoe Road, Ruawai
09 439 2115 or 027 282 2926
ethataylor@xtra.co.nz

Cherry trees do they go or do they stay?



The future of Paparoa's cherry trees was the topic of discussion at the Village Green on Thursday 14th May. Graham Taylor introduced Ashlee Lawrence, Northland Regional Council's Bio-Security Officer to approximately twenty interested locals and representatives from Progressive Paparoa and Keep Paparoa Beautiful.

Ashlee outlined all the known facts relating to this variety of cherry tree, which led on to a series of questions and possible actions which could be taken. Many people struggled with the disappointment of the likelihood of losing the trees. A vote was taken with the outcome that the poorly growing trees on the hill between the village and Oakleigh Road should be removed immediately.

In the interim, a sterility test is to be done on the oldest trees planted on The Green itself. In the event that they are proven NOT sterile and that the seeds are spreading uncontrollably, they too will be removed.

This gives time to consider how the village can be beautified with something more environmentally in tune with our natural surroundings and to continue with further plans for an exciting future for Paparoa. Keep Paparoa Beautiful will be seeking advice on suitable plants that will enhance the village. PP

Speech competition ...

Wow, what a night!

Sixteen students from Tinopai, Matakohē, Paparoa, Maungaturoto and the Otamatea Christian Schools were given the opportunity to present a speech based on ANZAC Day for the annual Paparoa Lions Club Speech Contest. They all rose to the challenge in a truly remarkable way.



Contestants with their certificates and prizes

Placegetters pictured with Lions President Mark Pilkington and Judge Warren Osbaldiston:



Seniors (Year 7 & 8):
1st Amy Lawrence, 2nd Te Ao Marama Te Wera, 3rd Harmony Day



Juniors (Year 5 & 6):
1st Jared Brain, 3rd Chloe Leaf, 2nd Emma Philips

The speech topics were:

"ANZAC Day, what does it mean to me?"

"Did anyone from your family or a family you know go to the First World War – tell us about them?" and

"Families at home, how did they cope during and after World War 1?"

The audience was kept engrossed as each speech centred on the WW1 involvement of New Zealanders in quite different ways. From the bravery of the men and women who sailed off to parts unknown in order to fight in a war not of their country's making, to the animals who died alongside them, and to the people left behind to 'keep the home fires burning'.

One interesting speech outlined the part played by Edith Cavell, the brave woman for whom Paparoa's Lane and Hospital were named. It was heartening to hear how these young people have gained more appreciation and pride in our country and recognise the struggle all New Zealanders experienced during and following the War.

Margie Hutchinson, Principal of Matakohē School, said it was first thought that the topics would be difficult. However, the children enjoyed their research and discussions with adults about the War and came up with some great material.

Students now have a broader understanding of the whys and wherefores of WW1.

Contestants were:

Alana Yardley and Coryn Yorke from Maungaturoto; Riley Southern Vasey, Emma Philips, Aleesha Butt, Te Ao Marama Te Wera from Matakohē; Harmony Day and Waru Harley from Tinopai; Joshua Hooton and Candace Smith from Paparoa; Chloe Leaf, Jared Brain, Tegan Leaf and Tyga Daniero from the Otamatea Christian School; and Lola Smyth and Amy Lawrence from Otamatea High School. PP

1852 map at hall

The Paparoa Hall committee have happily taken possession of a large framed map of the Kaipara Harbour as surveyed by H.M.S. Pandora 1852 and re-surveyed 1886. It includes all the channels from the Harbour entrance and the Wairoa River up to Mangawhare.

Donated by Dorothy Boyd, it will soon be hanging in the Supper Room and will be very interesting for all historically-minded people. PP

Carpet Layer

20 years experience

phone Ian Ross

09 431 6939 a/h
027 4996 413

FRESH & FROZEN
Oysters, Mussels,
Fish & Kina



Wed, Thur, Fri 10am - 4pm
Sat 9am - 1pm
1994 Paparoa Valley Rd
09 431 6089

Sacred Soul Circle United in Love, Joy, Truth and Oneness

Sacred Soul Circle is a monthly gathering of meditation, healing, sacred teaching and co-creation. The circle will take place on the 2nd Sunday of each month, starting on Sunday 10 May from 10am to 12noon at Marohemo Hall.

For more details, contact Helen 021 938 024
\$10 (waged) \$5 (unwaged)

Gratitude Exchange to cover costs
Please come along and help make the magic happen!

THE KAURI MUSEUM

Real New Zealand Heritage

What's on at your Museum

MATARIKI - 18 JUNE - 19 JULY 2015

'OTAMATEA' Primary Schools displaying the use of traditional and non-traditional materials to celebrate the Maori New Year.

FREE Entry to the Museum for residents of the Old Otamatea District.

5 Church Road, Matakohē, Northland. p: 09 431 7417 w: www.kaurimuseum.com

The Old Post Office Guest House Bed & Breakfast

Deb & Kevin 09 431 6444
www.oldpostofficeguesthouse.co.nz

For a
warm
welcome

- SMALL GROUPS OR LARGE
- MEALS ON REQUEST



Serving the community since 1903

Paparoa Village Cafe

Relax & connect
with
family & friends
over
fresh, hearty food
at your
comfortable
community cafe

Mon-Fri 6am-3pm
Weekends 9am to 3pm
Ph 09 431 6069

Fire Force



CALLOUTS

March

13 Scrub fire Wh'pirau
19 Grass fire M'whai
22 Accident Ruawai
24 Structure fire Ruawai
28 Smoke showing .. Paparoa

April

3 Grass fire Arcadia Rd
5 Controlled burn .. Paparoa
7 Vegetation fire Pahi
8 Controlled burn .. Arcadia Rd
8 Controlled burn... Bayleys Bch
9 Controlled burn... Paparoa
10 Scrub Fire Dargaville
10 House fire Ruawai
27 Truck rolled M'gto

May

3 Rubbish fire Ararua
6 Alarm activation.. M'gto
16 Accident..... Paparoa
17 Stump fire..... M'gto

Alice is coming to town



Saturday 4th July 7:30pm

The Lions Club of Paparoa and the Rotary Club of Maungaturoto & Districts are supporting the opening Charity Night of the Otamatea Repertory show 'Alice in Wonderland'.

Whenever possible the two Clubs look for projects which are multi-faceted. Funds raised are put towards a particular community project. As a result, actors will have a full house to perform to on the opening weekend. It is hoped that the additional promotion of the show will bring more people to see local talent and that the Theatre will continue to be able to stage high quality shows.

Prior to the show a complimentary drink and nibbles will be provided in the Country Club upstairs from 6.30 to 7.15pm, with the show starting at 7.30pm. There is a great raffle prize drawn at the end of the show.

Proceeds from this charity night will go towards upgrading the sound system and acoustics in the Maungaturoto Centennial Community Hall.

Memorable songs and whimsical escapades highlight

Alice's journey through wonderland, culminating in a madcap encounter with the Queen of Hearts and her army of playing cards.



We encourage you to see this show. It is a showcase of fresh youthful talent as well as familiar faces from our

area. It is a privilege for Lions and Rotary to be involved with ORT's most recent show.

Opening show admission prices are Adults \$28, Seniors \$25 and Students \$12.

Tickets can be obtained from:

Graham 431 8722
ggdonald@xtra.co.nz
Pete 431 6822
hames.jones@xtra.co.nz
Eileen 021 142 0357
eileen.parsons@otamatea.school.nz
Stella 021 149 0877 stella.clyde@otamatea.school.nz

Tickets also available from Tony's Lotto Shop. Note there will be NO door sales on opening night.



You won't go away hungry!

THE CRUISER BAR and GRILL

- Wholesome, affordable meals
- Fully licensed
- Family friendly
- Inside-outside dining
- Private functions



In the
village,
Paparoa
Valley
Road

OPEN WEDNESDAY to SUNDAY, 5pm 'TIL LATE

ph 09 431 6918

BATTENSBY Bros. CONTRACTING LTD

- Ground Cultivation • Silage and Hay
- Fertiliser Spreading • Fencing



Glenn 021 983 734 Ross 021 983 594
Ph: 09 431 6186 Email: battensbybrothers@xtra.co.nz

ORT brings classic tale to life

Anyone who is familiar with Alice in Wonderland knows the White Rabbit's cry - 'I'm late ... I'm late ... for a very important date'. Paparoa resident, Tanith Stephenson, who is playing the role of the White Rabbit in ORT's upcoming production, is adamant that she is in fact very punctual.

Like most mothers, Tanith prides herself on being very organised. The role of the White Rabbit is one of the pivotal characters in the story and Tanith is excited to be involved. Her previous stage experience included Shakespeare and theatre sports, when she attended Howick College.

Although new to Otamatea Repertory Theatre, Tanith is not new to the area, having lived here for eight years. She and her two children, Kylan (8) and Scarlett (4) have a large extended family in the area, as she is one of the Pook family.

Another member of the cast, Katrina Poyner (12), who lived in Paparoa for many years and attended Paparoa Primary School, is playing the role of the dormouse.

A keen singer, Katrina has performed at the Northland Performing Arts Festival for the past four years and last



Tanith Stephenson and Katrina Poyner are both delighted with their roles in Otamatea Repertory Theatre's production of Alice in Wonderland.

year was awarded Merit in her Trinity College Grade 4 singing exam. Katrina is thrilled to have a main character role in Alice in Wonderland and particularly enjoys joining in the antics of the Mad Hatter and the March Hare.

The show opens in early July and runs for a season of eight performances on school holiday weekends.

Tickets will be on sale soon at www.ort.org.nz and Tony's Lotto Shop in Maungaturoto.

ORT

Keith the TV Guy

Freeview digital TV



16 TV and 9 Radio/Music channels are currently being transmitted.

Satellite dishes, decoders, cable etc., supplied and installed.

09 431 7143
or 021 239 4251

PAINTING

Building Gib Stopping

- Alterations
 - Maintenance
 - Interior & Exterior
- anything considered*

CAN WE FIX IT? YES WE CAN

PATRICK JOHANSON, FISHER ST, PAHI
021 154 5679 09 431 6020
patpats@farmside.co.nz

Pets in the Valley

... Winter horse sense



With winter drawing closer, there's always that dilemma in the mornings whether to take the horses' covers off or not. The wrong decision could end up with them cooking or freezing.

So why do we bother putting covers on horses in the first place? Cows seem to cope well without them and, provided there are some trees for shade or shelter, horses should be fine shouldn't they? Well, yes and no!

I guess we keep horses to a much older age than most cattle. As horses get older, and often thinner, they lose the ability to thermo-regulate. Consequently they not only get colder more readily, they also get hotter more quickly. Hence the need to take covers on and off, and also to have different weight covers to allow for seasonal changes. Another obvious reason to cover them is to keep them clean. It is much quicker to go for a ride if you don't have to chip layers of mud off before you can put a saddle on, although in saying that, they can still somehow get quite dirty.

There are a few pitfalls that can occur with covering horses. The worst I have seen is a case where the front of the cover that sits on the horse's wither had cut through the skin creating a large raw wound. In this part of the horse the spinous process of the underlying vertebrae is very close to the skin and especially in a skinnier, older horse there is not much soft tissue to protect it. Don't tell Ken, but if I'm worried a cover is pressing too much on the wither, I sew a pair of his (older) thick socks into the area. Best not to leave covers on for weeks at a time in wet weather without checking what's going on underneath.

Hope the winter is being kind to you and your animals.

Janine

STUDIO "CRESCENDO"

PIANO/KEYBOARD
THEORY, SOLFEGGIO CLASSES

-INDIVIDUAL & GROUP LESSONS
- AGE: FROM 5 TO 95 :)

(09) 431-7128; 021-205-3997

Maryna Yagudina

"You learn notes to play to the music
of your soul"

FENCING CONTRACTOR

For all types of fencing, stockyards,
handyman work, tree felling, tractor work etc.



phone

**Mike 09 431 6509
027 203 2694**

email

mandsplunkett@slingshot.co.nz

FARMWORK SERVICES LTD

PAINTER

Dave Stephenson

- Interior
- Exterior
- Roofs
- Mould spraying
- Waterblasting

No job too small

09 431 6623
027 490 3522

KAURI COAST SEAFOODS

Oysters • Mussels • Smoked Fish

Now agents for UFO Cold Smokers,
Cookers & Accessories

09 431 6684
021 245 8820

540 Pahi Rd
Paparoa



Fresh flounder supplies daily



**Plunket
Paparoa**

Want to make a difference in your community? Are you interested in supporting initiatives for families with children under five?

Join this amazing volunteer group and contribute to this worthy cause. There is a place for everyone, and your contribution can be tailored to suit your lifestyle. Join us today! 021 033 5128 or tina.ball@plunket.org.nz

Playcentre Paparoa

Playcentre is open Tuesdays and Fridays only 9.30am-12.30pm. Please note, no Monday sessions as we have changed back to Tuesdays.

Tina Ball 021 033 5128
t.ball@xtra.co.nz

Letters from the Old Post Office

Out and about ... just further away

Normally, HE is the man-in-the-shed but recent events proved that he could mingle with the rest and become, if only briefly, the man-out-of-the-shed and out-and-about in Christchurch.

A family member had requested our attendance at an important celebration. (In truth, my eldest simply stated that we would put in an appearance, or else). Concurring meekly we set about organising the trip, each according to our particular strengths. In other words all air line bookings, car parking, packing and animal arrangements were one person's responsibility, and waking and dressing appropriately were the other's.

Several pre-flight brandies eased the pain of flight, as did the manly discussion of the mechanics of flight and of all possible explanations of the variations in engine noise. Thankfully Christchurch airport saw us both alive and communicating civilly, if only just.

The next day we were up bright and early and set off to view the pop up containers in central city. The man out-of-the shed was fascinated with the range of uses these had been put to. He spent some time under a container cafe table checking on joints and seals. Pretending he was suffering from mental health issues, I occasionally smiled sadly at other customers and murmured, "It's all right, dear." Safe in the knowledge, of course, that his hearing is less than perfect.

Later near the Port Hills we saw the earthquake devastation close up and noticed with awful fascination how parts of houses still swung open over rock slides. Once again containers were in use, this time helping to hold up the crumbling hills. It was seeing the houses still ripped open and exposed four years after the earthquakes that really helped us to understand part of what the residents had gone through and are still enduring.

Next day, in bright contrast we winned and dined at Pegasus Bay vineyard. The man out-and-about even wandered willingly around the beautiful gardens. Possibly, the beneficial influence of a jolly good wine.

All too soon however, the genius man-out-of-shed was once again replaced with the more common man-in-shed. The excitement of foreign travel fading, it may be some time before the rarer outdoor genius is again sighted.

Deb C

Matakohe House



**Licensed Café
and
Bed & Breakfast
Accommodation**

CAFÉ: Open every day for Lunch,
Morning & Afternoon Teas, and Dinners

Check out some Matakohe House specialties:

MUSSELL & KUMARA FRITTERS (to die for)

NACHOS (spicy beef with sour cream)

'A LA CARTE' Dinner Menu

all our food is home cooked

Bookings are absolutely essential for dinners

WE CATER FOR ALL CELEBRATIONS - GIVE US A CALL
Matakohe House, 24 Church Road, Matakohe 09 431 7091

HOMEKILLS



WAYNE & ANNETTE

09 439 2020

Dry Aged Beef Specialists
Traditional Manuka wood smoked Bacon & Ham

NEW LOCATION

TOKA TOKA



From our family to yours ... an edible wilderness

An edible wilderness (otherwise known as a food forest) is a permaculture idea where we mimic nature's plantings; using specific trees and plantings in layers like a forest that feed each other, or us. Perennial fruit and vegetables grow in abundance, and there is less and less maintenance needed, compared to the usual orchard work which is seemingly never ending.

We were introduced to this idea whilst doing the North Tec Sustainable Development Course at Arty Farties, taught by Heidelind Luschberger. Unfortunately, we had already planted 26 fruit trees at home, but decided we could convert the area to this new way of planting out our land. This, like all our projects, is ongoing.

The scourge of the district, kikuyu grass, has made the job harder than it might otherwise be, but we are slowly adding wood chip mulch and under-planting with perennials such as yacon, parsley, comfrey, artichoke, borage, queen annes lace, dandelion, calendula and many more. Tree lucerne, eucalypts and other fast growing nitrogen fixing trees are planted in between,

essentially feeding the fruit trees as they grow, and which will also be chopped for mulch to keep their height down.



Beautiful native species such as kowhai, whau, hebe and kakabeak also have their rightful place.

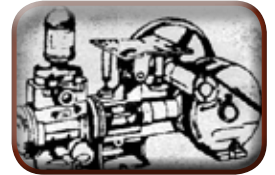
You can google Robert Guyton of Riverton, who has developed a food forest over the past 20 years. It's amazing what he is growing in a cold district. Luckily for him he can simply throw seeds down without kikuyu growing first. Also James Cameron, of the Wairarapa, is developing a 50-acre version of his own that will feed huge numbers of people when in full production.

Since starting to develop our edible wilderness, it's been great meeting more and more locals who are doing similar things. It's a way to utilise our land feeding healthy fruit & vegetables to a lot of people whilst regenerating the land without ongoing inputs. Food for thought?

Jenny Gilberd-Longdon

NEEDHAM PUMP SERVICES

For all Water Pump Supplies
& Repairs



09 431 8235

Ross 027 669 4464

Daryl 027 271 1961

32 Whaka Street, Maungaturoto

The Glass Guy



**Phone Colin
09 431 6595**



What's Hot

Widespread publicity in various media sources that The Landing is the best place to stop for a break along State Highway 12.

What's Not



A fishing net full of dead and dying fish strung illegally right across the channel below Cutter Bridge and left for a number of tides. Fisheries Inspectors are investigating

Crompton Engineering Ltd

**Phone/fax 09 439 2393
31 Jellicoe Road, Ruawai**



Hay Racks
- covered
or uncovered

Palm Kernel Trailers



**website: cromptonengineering.co.nz
email: crompton.eng@xtra.co.nz**



Rhoda Morrison

Your Full Time Local Real Estate Agent

Top Rural Salesperson
last 4 years Region 1

Listing to sell NOW

**09-431 6912
0274 800 691**

rhodamorrison@xtra.co.nz
www.roperandjones.co.nz



**first
national**
REAL ESTATE

Roper & Jones

Dargaville Realty Ltd
Licensed REAA 2008

A1 Cats Boarding Cattery

Ken & Faye
Subritzky
548 Pahi Rd



Ph 09 431 7477
www.a1cats.co.nz



Primary School news

In Week 3 of Term 2 we were very lucky to welcome the Duffy Theatre group to entertain and inform us. Duffy made it his mission to introduce Sienna to the wonders of the local library where your library card is your passport to the universe!

Our children have already chosen the book they would like to receive, free, at the end of the term. We are very grateful to the local and national sponsors who make this programme available to us. Our annual Quiz Night will be held on Saturday 27th July. Everyone is welcome; start swatting up now!

Plans for our annual Possum Purge are already underway, with our first planning meeting well attended. Possum hunting will be from Thursday 17th September and our Prize Giving Gala on Sunday 20th. More details to follow.

We are all very proud of Ms Harper, our new entrant teacher, who recently graduated with her education degree, after many, many hours of hard work and study.



Ms Julie Harper
Bachelor Education (teaching)

Alison Cadman-Smith, Acting Principal

HANDYMAN



all jobs,
odd jobs

BUILDING & PAINTING

ph Cam 431 6309
021 77 77 92

Thanks from Tinopai School

Tēnā koutou katoa, To the very good people who supported Tinopai School at the Fishing Contest in January, 2015: *Tēnā rāwā atu koutou me te mihi tino nui mō ō koutou manaakitanga.*

Thank you with much respect to you for your kindness and support of us, Tinopai School.

From the tamariki, Board of Trustees and the school community of Tinopai School, we thank you from the bottom of our hearts for your generosity.


The weather was fine, the fish were jumping and the laughs were flowing and due to your generosity, the day was as successful as we hoped it would be. We know there are things that we can do to make next year, 2016, an even better day. We will be in touch again, because we are determined to keep this 15 year tradition a happening thing!

We look forward to seeing you in the future and again, we say thank you!

Ngā mihi tino nui ki a koutou.

Sonya Kaihe, Principal

SKELTON'S

Be prepared ... 
cold weather here soon!

We are well stocked with
beanies, gloves and socks in wool
as well as luxurious possum



New Season's knitting
patterns & wool in store!
We have all the accessories
you need to complete a project!

Skelton's Paparoa Drapery

Mon-Fri 8.30am to 5pm Sat 9am to noon

Ph 431 7306

Dog friendly zone



Indoor art section

The North Kaipara Agricultural Association is considering creating a dog friendly park within the Paparoa showground. However, before investing in the development of such an area, NKAAs needs to know whether Kaipara District dog owners would be interested in using this proposed facility.

With the rugby season starting, dogs are not permitted on the main arena where rugby games will be played, due to concerns for player welfare.

A space has been identified that would be a perfect dog area. In an attractive setting, it would be a large space for you and your dog to enjoy. Plus your dog will get to meet other dogs and you will get to meet other owners.

If you are a dog owner, please call Elaine Christie 431 6011 and give your opinion, either for or against. Please help us decide on this important issue.

Woof Woof

The Paparoa A&P show has announced that the topic for the Zephyr Farms special class in the indoor art section is: an *iconic Kaipara event* – an event that celebrates life in the Kaipara. Examples of these could be events such as the Paparoa A&P Show, Pahi regatta, Tinopai fishing competition, market days, Arapohue A&P Show, Northland field days and so on. Entrants can use any medium. The entry fee is only \$2.00; the prize of \$250 is sponsored by Gerard Sullivan of Zephyr Oyster Farms Ltd.

With seven months to go before your entries need to be completed, now is the time to start creating. The complete Indoor Section schedule will be available from Monday 15th June at Skelton's Drapery or phone us at 431 6011.

Over to you, get creative now and be prepared for February's 140th show.

Gary Christie

Lifestyle Autos new in town

Lifestyle Autos, owned by Roger Price, is the latest business that has opened in Paparoa. It is set up in the workshop (next door to GAS) that was formerly Cam's Autos.

Roger and his wife Mary, have lived in Petley Road, Paparoa, for about 10 years. Roger has been a mechanic all his life, working and owning his own garages in Auckland. He also worked at the VTNZ testing station in Whangarei. For the last year he has been living and working in Mangere at Kiwi Coaches workshop division, doing WOFs and rental car maintenance.

When the lease on the workshop at the garage premises in Paparoa became available, Roger took the opportunity to open up his own business. He will be doing WOFs and all other car and truck mechanical work.

For prompt Warrants of Fitness call 4316620 or book online at rogerprice@hotmail.co.nz.

Lopdell House gallery, art & coffee

art

I recently visited the exciting new gallery at Lopdell House in Titirangi. I know a lot of people have moved to Paparoa from near there so you may want to drop in when next you are down visiting family and friends.

Te Uru Waitakere Contemporary Gallery is a purpose built new gallery space next to the original Lopdell House building, which now houses the Deco Café. The building makes the most of the stunning views of the Manukau Harbour as you climb up the glassed-in stairs on the outside of the building. The interior follows the current architectural style where the floors and stairways open vertically to each other with glass balustrades, giving visitors a good sense of the space but not a place for the nervous to take active small children.

I think on a first visit the architecture can overwhelm the exhibits. Barry Brickell's pottery appeared very dated in its heaviness and rough textures, surrounded by ethereal soaring white walls and back-lit ceilings, where the more contemporary pieces looked right at home.

In a cathedral-like gallery were a series of dioramas in low boxes which required crouching or kneeling to peer into tiny viewing holes, only some of which were lit. The impression was one of supplicants worshipping at the temple of art: possibly this was not the intention.

It is stimulating to reach out beyond the local from time to time and be stirred by glimpses of the larger world. The coffee is good there, too.

Helen Budd

PLUMBER

Kaiwaka to Ruawai

- 30 years' experience
- All plumbing services including new housing and maintenance



ANDREW KENNY
ph 027 642 8320

REMEMBER!



Your
pets
need a
holiday
too

Autumn garden pays dividends

Although the sun is still lovely and warm during the day, there is definitely a chill in the air on the dark early mornings, so winter is on its way.

I have kale, cabbage and cauliflower planted but the white butterfly are still around. My broad beans are up and growing well, although the snails seem to consider them nice places to congregate on - not eating them though - so they're easy to squash.

I have also planted seed for sweet peas, gallardias and leeks. Leeks are one of my favourite vegetables to grow as they seem to have no pests and are great to stir fry with almost anything. I hated them as a child all squishy in white sauce. How times change!

Now is a good time to spray your dormant fruit trees and roses with copper spray to kill fungal diseases. I am not very good at spraying anything, but my friend said her copper spraying efforts last winter paid huge dividends in better tree health, so maybe this year I will make the effort. Citrus that are not carrying fruit can be sprayed too as it reduces verrucosis - the disease that makes lemons look ugly.

Time also to mulch those empty garden areas - it really does pay off after you have finished any clean up of sad looking perennials and the remaining peppers and tomatoes.

Lastly, get out those garden books/catalogues and start planning what you want to grow next spring. Dreaming and planning is such fun on a cold day curled up in a comfy chair.

Stella Clyde

LOOKING FOR A FRESH APPROACH?

It's all about people and the love of the land.

Northland Country

Your local agent

is ready to list ... are you ready to sell?

Let's talk.



Catherine Stewart
Bayleys Northland Country
M: 0800 422 959 B: 0800 80 20 40
E: catherine.stewart@bayleys.co.nz

BAYLEYS
Mackays Real Estate Ltd.
Licensed under REA Act 2008

Birt & Currie Surveyors Ltd



Local Phone
09 280-9591

**Timely,
friendly &
personal
service**

info@landsurveyors.co.nz
www.landsurveyors.co.nz
PO Box 120 Paparoa 0543

Lance Keay Contracting Ltd

- Effluent Pond Cleaning
- Single Pass Tillage & Seeding
- Cultivation
- Fertiliser Spreading
- Hay & Silage Mowing
- 6 Ton Trailer

Taipuha RD1, Paparoa, 0571
09 431 6308 021 383 908
lance.k@extra.co.nz

HEY, KIDS . . . JUST FOR YOU . . .

World Oceans Day June 8



World Oceans Day is celebrated to remind us of the importance of ocean in our life and that threats to our ocean environment put our future in jeopardy. This year the theme is *healthy ocean, healthy planet*.

Three-quarters of earth is ocean. Millions of creatures are dependent on oceans for their survival. The ocean is the heart of our planet. Like your heart pumping blood to every part of your body, the ocean connects people across the earth, no matter where we live.

Plastic rubbish in our seas has a bad effect on the animals living there. Living so near the sea, any plastic rubbish around Paparoa could end up in

the ocean. We can all do our bit to make a difference by not dropping rubbish and by picking up any plastic rubbish that we see.



Here are some water jokes to inspire you:

- Q. Why did the whale cross the ocean?
A. To get to the other tide.
- Q. Why did the crab blush?
A. Because the seaweed!
- Q. Which part of a fish weighs the most?
A. The scales.
- Q. What is the best way to chat with a fish?
A. Drop it a line.
- Q. What is the strongest creature in the ocean?
A. A mussel.
- Q.. Which is the most famous creature in the ocean?
A. A starfish.
- Q. What did the Pacific Ocean say to the Tasman Sea?
A. Nothing, it just waved.



Winner: "Draw the Easter Bunny"
Corban Gilbert age 8



BulbsDirect

PROUD TO BE LOCAL

NZ's Premium Online Flower Bulb Store



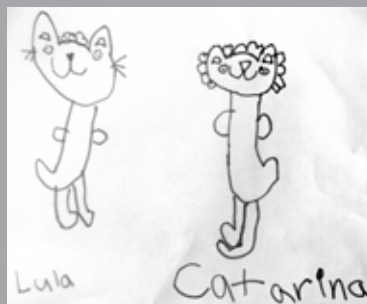
www.bulbsdirect.co.nz
info@bulbsdirect.co.nz

Lula the Cat's First Sleepover

Lula was going to go for a sleepover. She packed her bag. The sleepover that she was going to have was at Catarina's house.

Catarina lived in the city. They drove to Catarina's house. When they got there they got out.

Catarina and Lula played some games together. One of the games was hide and seek. Then she went back home again.



By Chloe Seward (6 yrs)

Paparoa Motor Camp



**check out
our
self-contained
cottages**

- Tent and Van sites, Cabins, Kitchen, Showers
- Internet available
- Public Laundry facilities
- Pump-out Station

Ph 09 431 6515

cnr SH12 and Pahi Road, Paparoa

Rally Adventuring with 85yr-old ... *Model A*

Matakohe locals Darcy and Trish Sterling have just returned from a month long, two island tour in their 85 year-old *Model A* Ford. They were joined on this adventure by Darcy's sister, Jo, and her husband from Brisbane. Darcy lent them one of his other 1930 *Model A*'s. The catalyst for the trip was the Bi-Annual National meeting of the *Model A* Ford Club which this year was held in Wanaka.

For the trip down to Wanaka they were also accompanied by Tinopai residents, Roy and Gay London in their 1930 *Model A* 'Phaeton'. Roy and Gay received a trophy at Wanaka for the 'furthest distance travelled to the event'.

By taking secondary roads wherever possible, their route passed through places such as Molesworth Station in Canterbury, the 100 kilometres of dusty gravel track a test for these elderly vehicles,

minutes. The World Record for the drive is 8 minutes! All 160 cars managed the trip without incident.

Other highlights included a drive along the Chard Farm track which follows the Kawakawa Gorge to Queenstown but on the opposite side of the river and on a private gravel track. The Rally also featured a public display day, a period dress up High Tea, and several other social events.



and down the West Coast to Wanaka where they joined 160 other *Model A* Fords for a week of scenic touring.

Great weather made the event successful with activities scheduled every day. One of the highlights was the drive up Pike Range to Snow Farm. This 5,000 ft climb with its 135 hairpin bends made famous by Possum Bourne, took them 40

Following the rally, Darcy's team continued their tour of the South Island, including a visit to Bluff.

Fine weather followed them up the East Coast and they visited the De Havilland Factory in Manderville where Tiger Moth aircraft are restored. An unscheduled overnight stop in Gore was needed when the radiator in Darcy's

car developed a leak. A local tradesman repaired it enabling the drive to continue next day.

Although bad weather was forecast for the ferry crossing from Picton, it held off until later in the day when ferry services were cancelled. They then spent another four days getting back to Matakohe via the North Island's east coast.

The total journey of 5,000 kms was achieved with no major breakdowns or punctures. With speeds averaging only about 70kph, there was plenty of time to take in the magnificent scenery on offer. A road trip of the old-fashioned variety!

Dave Healey



Trish & Darcy and their

KMU SURVEYS LTD
MAUNGATUROTO

Ken Urquhart

Licensed
Cadastral
Surveyor



09 431 8705
021 161 2344

kenurquhart@xtra.co.nz

"No job too small"

Ross Latto

**LICENSED
BUILDER**



House construction, alterations,
renovations, general repairs

Ph **09 431 7442** **021 772 766**

PO Box 17, Paparoa

g.a.s. Paparoa

Safety First

- Petrol, Diesel & Oil
- **LOWEST** priced milk
- Great variety of Bait



John & Nicki Eddy
09 431-6302

Mon-Fri 6.30am-6.00pm
Sat 7am-6pm; Sun 7.30am-5.30pm

FREE SAFETY CHECKS

The wet weather is here so come in and see Dean and Reece for your free tyre safety check today.

Give us a call to make a booking.

Garnetts Tyre Service

2 Gorge Rd, Maungaturoto. Ph 09 431 8255.

BRIDGESTONE **TYRE CENTRE**

Country Cutz

Gay Northcott
The Salon - Paparoa Village



Fully qualified
and professional
friendly service

- Ladies & Mens Cuts
- Perms, Colours
& Highlights
- Weddings

Open Thurs-Fri
Wed & Sat by appt

After hours phone Gay 431 7007
Salon 431 7255

REX BROWNE CONTRACTING

- Limestone & Metal Cartage
- Truck & Digger Hire
- Farm Roads
- Earthwork & Dams
- House Sites & driveways
- Wrapped Silage & Hay
- Cultivation
- Fencing & Mulching



**Maize
Silage
planting &
harvesting**

☎ 09 431 7556
☎ 021 720 590

White Rock Gallery

With the resources of our precious planet as stressed and stretched as they are, it's wonderful to see a large number of the contributing artists at White Rock repurposing, reusing and upcycling second hand and vintage items to create new and exciting works of art.

Crystal, glass, paper, fabric, fibre and found items are transformed with flair and imagination before arriving at the gallery. Anything from candle holders, toys, cushions, aprons and jewellery, to hand painted tools. The materials used and the artistic input required to transform them are all utterly unique.

As some of these gorgeous items have arrived in the gallery since the recent refresh, and so do pop in and take a look at what's new.

Jillaine Murray

Paparoa Toy Library



Once again, it's that time of year when we look for ways to keep children occupied and warm. The Paparoa Toy Library is the ideal place to visit.

We have a wide variety of toys, puzzles, rideons, train and construction sets to name a few which will keep the little ones occupied for hours.

In the world we live in, play and all things playful are more important than ever, with increased pressures on children from a young age to be in structured activities. Research shows that children are playing less than ever, and yet it is through play that younger children develop skills and cognitive thought processes to cope with the world.

The committee of the toy library invite you to visit on a Wednesday from 10am to 1pm; we would love to see you. Our team of volunteers work very hard, not just for the benefit of our own children and grandchildren, but for all pre-school children who live in the community.

Hilery Poyner

Four generations of the Weber family ... attended the Lions Schools Speech Competition.



Pictured here:

June (Edsel)
Weber (2nd
left) with her
daughter
Helen Baker,
granddaughter
Desna Baker
and great-
grandson Zane.



OFFICE RELOCATION

Our Head Office has now moved to
2088 Paparoa Valley Road, PO Box 108 Paparoa
Ph/Fax 09 431 6331 or 09 431 8339

(Previously Powell Contracting Ltd)

For All Your Earthworks – Roading – Drainage – Siteworks & Landscaping Supplies

**WE STOCK; Bulk Compost – Topsoil – Sand – Riverstones - Lime Chip –
Blue Chip – Bark – Post Peelings – Woodchip – Builders Mix – Cement –
Easi-crete – Timber – Posts – Battens - All grades of metal Nails & Staples**



Pro-max water tanks - Aqua water tanks - Drain coil – Culverts –
Hurricane Gates - Full range of StrainRite fencing supplies



Stockist of Daltons & Watkins:

- Potting Mix
- Compost
- Bagged Shell
- Pebble and Scoria
- Bark & Fertiliser

Open Weekdays 8am to 5pm
Saturday 8am to noon

BOOK REVIEW

TITLE: *Owen Marshall's
Selected Short Stories*

EDITED BY: *Vincent O'Sullivan*



A New Zealand writer whose focus is on small semi rural towns and their inhabitants. Marshall writes mainly about inarticulate men, men who have trouble fitting in and the resulting marginalisation that occurs. Many stories have a subtle twist to their ending, leaving the reader with an uncomfortable sense that we, along with the stories' small town inhabitants, have been found wanting. Try *Prince Valiant* a story based just north of Dargaville, or *The Fat Boy* and see what you think.

Deb C

Maungaturoto Care and Share

Free - Individual and
Family Counselling

Two NZAC Qualified Counsellors

For appointments, please call:

(09) 4318227

Everybody's Reading Room

What do a teacher from Dargaville, a real estate agent from Mangawhai, a healthcare worker from Waipu and a farmer from Paparoa have in common? Not a lot, usually, but right now they are leading actors supporting another teacher (Guy Smith from Maungaturoto, who plays the main character) in a play bringing to life an important story from Dargaville's past.



Night after night these people meet in a warehouse near the old Maungaturoto railway station to rehearse the story of a Dargaville couple who opposed the sending of men to battle in WW1. The Wairoa sent hundreds of young men to support 'England and Empire' in that war. The larger proportion never came back. However a few people opposed conscription, and those few were treated with hostility as traitors.

The main character, Arthur Grace, is a fictionalised version of Arthur Gregory, Quaker and draper, of Victoria St, Dargaville. Behind his

drapery was a meeting room and library where locals took classes, discussed issues and borrowed books. When NZ entered the war, his opposition to conscription meant he was prosecuted and jailed, in addition to being assaulted from time to time for his public speeches.

The script of *Everybody's Reading Room* was written by playwright Sheri O'Neill of Tinopai. The play gives Grace a relationship, possibly closer than Gregory actually had, with a conservative politician based on Gordon Coates. It also gives him a relationship that Gregory certainly didn't

have, with a visiting British actress. However the story is true to his *Reading Room*, his aims, his marriage, and his Quaker ideals.

In addition to the five actors mentioned, the cast includes others from Tinopai, Kaiwaka and Maungaturoto. The play is produced by Platform Thirteen, who toured a version of *The Tempest* in 2012, and it opens in Dargaville on May 30. Further performances will take place the following weekend in Maungaturoto and on June 13 & 14 in Whangarei.

AlisterWilliams



Motoring Matters

If you are seen driving a shiny classic or vintage car, the immediate perception of many people is that the car belongs to a well-to-do person. The truth can be quite the opposite for this is an expensive hobby. Restorations of yesterday's mechanical structures take up many hours and dollars. So the so called well-to-do person has spent it all on said hobby!

My first restoration was of a Riley Lynx which I acquired for \$50. It took twenty years and during that time my wife and I raised 3 fine children and paid off a mortgage. I eventually sold the Riley, much to my current regret now that I realise its present value, but truth to tell, I was tired of it. I have since restored a very rare Standard Light 20 which now resides in Australia and has appeared on television. And, I have painstakingly put together an Austin 7 Chummy from a basket of bits and pieces!

Although I have needed to work overseas for extremely long hours to finance these projects, all this restoration became an addiction which I only managed to free myself from when I at last saw the back of the Austin.

The most rewarding part is knowing that these vehicles could have ended their existence at Glenbrook Steel Mill and reincarnated as non-stick frying pans!



Fully restored An Austin 7 Chummy

JCB

Moved to Ruawai

Cam's Autos



all mechanical repairs & servicing, warrants of fitness cars, 4WDs, trailers & utes. 2km past the school on left

4615 SH 12, Ruawai

Ph 021 255 4077

camsautos@gmail.com

Data Networks, Power Protection & Solar Installation

Installer of Wireless & Wired Networks, & Remote Location Power Solutions
Installer of World Leading Solar Hardware Brands

Redline IT Ltd

Pierre Hay 027 203 3834

ajp.hay@gmail.com

Paparoa Store

Proudly Supporting Paparoa

OPEN 7 DAYS

Monday-Saturday 7am-6pm

Sunday 9am-5pm



We stock a great selection of

CONFECTIONERY, ORGANIC, DELI, MEAT, FRUIT, VEGES, FROZEN GOODS, BEER, WINE and a wide range of grocery items at excellent prices

DVD's \$1 to \$8 per night

EFTPOS NZ HERALD POST CENTRE

Phone / Fax 431-7320

Cnr. Franklin Road and State Highway 12

Kevin's Shed panel beating & repairs

Just ask

027 642 4991

09 431 6444



3245 Paparoa-Oakleigh Rd

Ross Murphy Plumber

CERTIFYING
PLUMBER

NEW HOUSING
RENOVATIONS
MAINTENANCE

09 431 7510

021 424 252



'Niue and the Haines'... a new endeavour

Back in the mists of time, 2010 to be exact, the Haines family first went to Niue. It was less popular than other tourist spots, it was about the same flight distance as Rarotonga, about the same price and purportedly beautiful. The choice was made.

Niue was and is beautiful. A raised coral atoll 30 metres above the ocean (much safer than other lower lying Pacific islands) boasting tracks leading down to private and spectacularly blue coves. So private that Randall learned the best cove had been for the king's sole use.

Despite being originally dubbed *The Savage Isles*, (apparently Cook's welcome had not been as friendly as that experienced by the Haines), the Niueans are an hospitable and friendly people. In fact, there is really no crime on the island (popn. 1,500 currently in residence with a further 23,000 in NZ) and the virtually uninhabited prison hut is on the edge of the lovely golf club.

After hiring motorbikes and exploring the roads at an exhilarating open road speed of 60 kmh the Haines fell in love with the place. They returned in 2012, having researched



possible accommodation build projects. Randall was back in entrepreneur mode.

Ideas panned out, people were met and by 2014 the Haines were back in Niue, signing up for a half hectare seaside property. Of course, Niue is closely associated with New Zealand making the process easier. Niueans automatically have NZ citizenship, they use NZ dollars and the island has the best living standards of the Pacific. The supermarket stocks a range of foods that are shipped from NZ, along with local produce.

However, for those who have been eying up the container outside Randall's workshop and wondering. The answer is that building supplies are hard to get and must be shipped in. All part of the grand plan.

Randall's intention is to build up to four cottages, concentrating first on renovating the existing 70s' cyclone rebuilt coral house. The container moves onto the ship in June and will take about four weeks to sail to Niue. Randall aims to arrive in July and set to work. How much work, and how much play remains to be seen.

The plan is for idyllic holiday accommodation for the Haines and others who would like to book a vacation. Email Randall at randall.h@xtra.co.nz if you have any queries.

PS: He does say that it is unlikely he will be able to take on more work around Paparoa until Nov 2015.

PP

OUT & ABOUT

An invitation to Join Te Radar and Otamatea HarbourCare Society planting trees on Sat 6 June, starting 9am, at Ashley and Karen Cullen's farm, Bickerstaffe Road, Maungaturoto. Help kickstart this new initiative to support farmers in the area by supplying trees and planting-power! Phone Mark Vincent 021 0829 8037 or 431 7353.

Paparoa Hall A reminder that the Paparoa Hall has a 'Food Premises Licence' and is available for hire. This means it can be used to prepare food for sale, either at a function in the Hall or at an outside venue, such as the Paparoa Farmers' Market. Call Robyn 431 7306.

Our condolences to the families and friends of both Jan Robinson and Marilyn Banks who passed away recently.

Kaipara visitor numbers. Figures show Kaipara had the highest growth in visitor numbers in Northland in the last year, almost double that of Whangarei. According to

figures released by Statistics New Zealand, visitors to Kaipara in the last year rose 20 percent, with the rest of Northland trailing behind.

Linking Hands AGM will be held on Monday 6th July 2015 at 7pm at 131 Hurndall St Maungaturoto. All welcome and it would be great to see some new faces attend.

Kaipara Kids Club - Daycare, Kindergarten, Before & After School Care, and Holiday Programmes. We are now taking pre-enrolments. If you have children aged 2-13 we have something for you at our Club! Call or email for an information pack. Phone 4318765, email office@kaiparakidsclub.co.nz

Cam's Autos has moved to Raupo (Ruawai) 4615 State Highway 12 - on the left 2km past the school. Ph 021 255 4077 camsautos@gmail.com.

GAS Paparoa During winter GAS closes at 6 in the evenings Monday to Saturday; and 5.30pm Sundays.



**NORTHLANDS BIGGEST
BED OUTLET STORE**



- 1/2 PRICE BEDS
- SECONDS-SAMPLES
- SLAT BEDS
- PILLOWS
- TOPPERS
- ADJUSTABLE BEDS
- BEDROOM FURNITURE

**STOP BY AT ELLE CEE'S AWARD
WINNING CAFÉ- WHEN YOU COME.**

(09) 439 2243
18 Freyberg Road, Ruawai

WHAT'S ON - JUNE 2015

SPECIAL EVENTS & MEETINGS

Kids Disco Paparoa sports pavillion. Sat 6 June 5.30-7.30pm \$2 see back page
Sophie-Elliot Foundation - Community meeting Leslie Elliot Safe relationships-
 Are you OK? Otamatea High School Wed 24 June, 7-9pm. ph Libby 431 6822
Paparoa JMB rugby Home game in Paparoa Saturday 20 June
Platform 13 presents 'Everybody's Reading Room Dargaville 30-31 May,
 ORT 6-7 June, Whangarei Forum North 13-14 June
Sacred Soul Circle - Monthly meditation, healing, sacred teaching. Second
 Sundays. next: June 14 10am-12 Marohemo hall. Ph Helen 021 938 024
Linking Hands AGM Monday 6 July 7pm 131 Hurdall St Maungaturoto
ORT presents Alice In Wonderland school holiday weekends July 4-19

REGULAR EVENTS, MEETINGS AND ORGANISATIONS

Anglican Church St Marks 1st, 2nd & 4th Sundays 10am, Hook Road, Paparoa
Ararua Church 10.30am every Sunday, All welcome ph 431 6622
Art Group Paparoa 1st Sun in month, Helen Budd's Studio, ph 431 6192
Art Studio, Ruawai Mon 10-12noon; Tue 7-9pm, ph Frances 439 2554
Arty Farties Summer Markets 9am-noon, opposite Village Green; Thur/Fri in the
 'Tile Shed' ph Anne 431 6229; Crafty Kids Club alt Saturdays 10-2pm, Rm 5 Paparoa
 Primary School; Beginners Patchwork Group, Mon 7pm, Te Pahi River Dr.
Badminton Starts 23 April, kids 5.30pm; older/experienced 7pm, Paparoa Hall
Crafternoons 1st & 3rd Wed in month, 1-4pm, Tinopai Hall ph Lyn 431 6090
Exercise to Music Tue 10.30am Paparoa Hall \$5 ph Rose 431 7418
Farmers' Market Fortnightly Sat 9-noon, Village Green Jun 13, 27; July 11, 25
Fire Force 1st & 3rd Monday in month 6.30pm Depot Rd ph Cohan 431 6668
Gardening Club 2nd Wed of month, ph Lea 431 6296
Grey Power Last Wed in month, 2pm, Hall next to Resthome, M'gto
The Kauri Museum 'The Man from Matakohē' exhibition ongoing daily
Library Mon 1.30-4.30pm, Wed 10am-12noon, Thu 1.30-4.30pm, Fri 9.30am-1pm.
 Open Market days - alternate Saturdays 9.30-1pm
Line Dancing Thurs 10am-noon Paparoa Hall ph Rose 431 7418
Mainly Music Wed 9.30am Paparoa Comm Church, ph Rebecca 431 7550
Matakohē Music Makers Wed 8 Apr 'St Patrick's do' 7pm BYO Sports Pav'n \$2 pp
Otamatea Quilters 1st Tue/mnth 7pm & 3rd Mon 10am, Paparoa Hall 09 439 2262
Outdoor Bowls Maungaturoto Green ph Tony 431 6026 or Brian 431 6884
Paparoa Community Church 10.30am every Sunday, Hook Road
Paparoa Hall Functions venue ph Robyn 431 7306 or a/h Loraine 431 7290
Paparoa Lions Dinner Meetings 3rd Mon in month 6.30pm, Sports Pavilion
Paparoa Playcentre Tues & Fri 9.30-12.30 Visitors welcome ph Tina 021 033 5128
Paparoa Plunket Society Coffee Group 1st Tue/month, 10am Franklin Rd
Paparoa Toy Library Wed 10.30-1pm, Paparoa Comm Church, Hilery 431 7330
Selwyn Centre Thurs 10am for over 65's, St Marks, Hook Rd, ph 431 8193
Sports Pavilion Functions venue, ph Vickie Owens 431 6432 for bookings
St Mary's Catholic Church 10am Wed, 6pm Sat, Maungaturoto
Table Tennis Tues 7.30pm, Sports Pavilion \$2 Pete 431 6822
Ukelele Players Beginners / experts, Thur 4pm Matakohē, ph Dennise 431 7012
Waka Ama Tues & Thur evenings 5pm, Sunday 10am, Pahi Domain
White Rock Gallery Open 7 days 10am-4pm, in Library building
Yoga Paparoa Sports Pavilion Mon 8.30am, Thu 9am, Thu 6pm, ph 09 280 9694
 PLEASE UPDATE US WITH YOUR DETAILS: press@paparoa.org.nz PP

HOOK, LINE & SINKER

There are still plenty of good snapper in the harbour which could be a bit slow at first, but a bit of perseverance will pay off. There have been some nice gurnard caught lately, while kahawai are a bit scarce around Pahi. However, some better fish can be found further out towards the bar.



Gravy

Paparoa Press CLASSIFIED ADVERTISING

Bee Swarms - If you see any bee swarms, phone Mike 431 6008 021 134 3747

Silage Bales
 Large round silage bales wrapped for sale
 \$80 plus GST
 Graham 431 7209

Working with Flax
 Dyeing flax & making kete
 18-19 July \$10 PP
 Bookings Geraldine 431 6742
 Community Connections

LOCAL TIDES for June 2015

JUNE TIDES - CALCULATED for PAHI-WHAKAPIRAU

DATE	LOW	HIGH	DATE	LOW	HIGH
1st	4.04pm	10.07am	17th	5.28pm	11.34am
2nd	4.47pm	10.50am	18th	6.10pm	12.18pm
3rd	5.29pm	11.33am	19th	6.50am	12.59pm
4th	6.12pm	12.15pm	20th	7.28pm	1.38pm
5th	6.55pm	12.59pm	21st	7.55am	2.05pm
6th	7.41pm	1.45pm	22nd	8.35am	2.56pm
7th	8.29pm	2.34pm	23rd	9.17am	3.38pm
8th	9.02am	3.26pm	24th	10.03am	4.27pm
9th	9.57am	4.22pm	25th	10.55am	5.22pm
10th	10.55am	5.24pm	26th	11.51am	6.23pm
11th	11.57am	6.30pm	27th	12.50pm	7.26pm
12th	1.01pm	7.36pm	28th	1.48pm	7.46am
13th	2.02pm	8.01am	29th	2.42pm	8.42am
14th	3.00pm	9.01am	30th	3.33pm	9.34am
15th	3.53pm	9.56am			
16th	4.43pm	10.47am			

Community Directory

EMERGENCY: FIRE ■ POLICE ■ AMBULANCE dial 111

COAST TO COAST HEALTH CARE

Maungaturoto Medical Centre: 8am-5pm Mon-Fri 09 431 8576
 Paparoa Clinic: Doctor Tue + Fri 8.30am-12.30pm..... 09 431 7222
 For urgent after hours medical service (Wellsford)..... 09 423 8086
DISTRICT NURSE Dargaville Hospital 09 439 3330
 Healthline - 24 hour service..... 0800 611 116
HOSPICE KAIPARA Dargaville Hospital 09 439 3330
KAIPARA DISTRICT COUNCIL Helpline 0800 727 059
 Mangawhai Office..... 0800 100 388
LINKING HANDS Health Shuttle Service, Maungaturoto 09 431 8969
LIONS CLUB PAPAROA Secretary Alistair Banks 09 431 6373
MAUNGATUROTO CHIROPRACTIC..... 09 431 8019
MAUNGATUROTO PHARMACY..... 09 431 8045
MAUNGATUROTO REST HOME 09 431 8696

OTAMATEA COMMUNITY SERVICES Community House 09 431 9080

PAPAROA LIBRARY Membership free-of-charge, Wheelchair access
 Mon 1.30-4.30pm, Wed 10am-12noon, Thu 1.30-4.30pm, Fri
 9.30am-1pm. Open Market days - alternate Saturdays 9.30-1pm
PAPAROA PLAYCENTRE Tina Ball.....021 033 5128
PAPAROA PLUNKET Cynthia Keay..... 09 431 8187
PLUNKET Helpline 0800 933 922
PAPAROA PRIMARY SCHOOL 09 431 7379
PARENT PORT Inc. free help for families Linda 09 425 9357
PHYSIOTHERAPY Lyndsay Bargh Mon/Wed/Fri from 8am...431 8576
PODIATRIST / FOOTCARE Jayne Short 020 4022 65998 / 09 431 7188
PUKE ARANGA TE KOHANGA REO 09 431 7089
YOUTH & WHANAU FOCUS South Kaipara, Rose 09 431 7418

Otamatea Quilters Challenge Night



A sample of the banners displayed

May's annual Otamatea Quilters challenge night proved to be another excellent show of members' talents when 16 colourful banners were submitted for all to see.

This year's topic was 'Living Colour' and the criteria for the challenge were:

- * The design must have as its subject a living entity and be worked in colour.
- * The piece could be machine or hand worked with any choice of surface decoration.
- * The piece must be orientated portrait wise.
- * Finished size measurements were to be 16" wide x 39" high.
- * It was to be quilted and have 3 layers.

Next year's Challenge was announced and it is 'The Monochrome Challenge'. For more information, contact Lyn King 09 439 2262

Disco for kids

Saturday night, the 6th of June, is the date of the Kiddo Disco, to be held at the Paparoa sports pavillion from 5.30-7.30pm. The Disco is a fundraiser for the sports association and it's a great opportunity for the kids to have something to do! For a \$2 entry, there will be lots of games and fun; dancing and dress up competitions as well as spot prizes. There will be food, drinks and glowsticks for sale.

Tina Ball

Paparoa Hall enjoys attention

Under the tuition of Jarrod McKelvie, painter extraordinaire, the Paparoa Hall has recently had a makeover by a group of Northtec painting students. Jarrod was delighted to have a large number of windows for his students to work on! A cheerful and helpful group, they have painted the exterior windows and doors and will be back in July to paint the interior of the windows and all the paintwork inside the Hall. Thanks for all your work and we look forward to your return!



These Level 4 students from the Kaiwaka class are: back row: Kurt Ellis, Raiha Tiopira, Jarrod McKelvie (Tutor), Mani Singh; Front Row: Mabel Tiopira, Ian Monahan and Paki Keepa. Absent are Whetu Milne and Paul Withers.

PAPAROA SPORTS PAVILLION

KIDDO DISCO



LIFESTYLE AUTOS
new business in town!!
Roger Price

Full mechanical services
Warrants of Fitness

Paparoa Valley Road
next door to G.A.S.
Phone 431 6620

R & D MACDONALD COMPUTERS

Call Ross with your computer problems & repairs
He'll even build a computer to your specifications



Ph 09 431 6221
027 932 8114

email: ross@paradisebreeders.co.nz

Wake up to weeds .. Agapanthus

Also known as African Lily, Blue Lily or Lily of the Nile, Agapanthus is a native of South Africa and was introduced as a pretty garden plant. Now that it has naturalised here, tolerating a wide variety of conditions, it has become a widespread weed nuisance.

It is a fast grower, forming robust clumps with spreading rhizome roots. As it grows, it forms dense mats, which choke native species and cause widespread biodiversity loss, especially of rare coastal herb, grass and shrub species.

Although the flowers are beautiful, its prolific seeds are blown short distances, fall down banks and are carried in flowing water. Seed and root fragments are also spread in contaminated soil, dumped vegetation and deliberate planting. As all small pieces of root are viable, removal by spade digging can be a laborious task especially in large areas.

Herbicide control works best when the plant is slashed or mown down as much as possible, and then sprayed. It can also be cut back and its stumps painted, but is recommended to have 2-4 repeated attempts in order to be effective.

Further details for agapanthus removal and control in Northland can be found on nrc.govt.nz and rainbowbrown.co.nz. Triclo (Triclopyr) 30ml/10L water plus 10ml spray wetter is recommended. PP



PAPAROA FARMERS MARKET
LOCAL GOODS DIRECT FROM THE PRODUCER



Fortnightly SATURDAYS
9am-noon at the Village Green

June 13th 27th
July 11th 25th

ph Graham 431 7209